



Capital Improvements PROJECT UPDATE



CLASSROOM ADDITION

North Paulding High School

CONCEPT
PLANNING
CONSTRUCTION PHASE 2
COMPLETED

HISTORY & BACKGROUND

- North Paulding High School currently has 109 instructional units.
- The school property measures 76 acres.
- Existing building area is 278,095 SF

DESCRIPTION

- Project will be constructed in two phases.
- 40 Instructional Units (Phase 2) including:
 - Science Labs
 - CTAE Labs
 - Physical Education Space
 - Media Center Upgrades
- Cover the open courtyard and convert into an expanded dining room (begins Phase 1).
- Additional serving line in lunchroom.
- 200+ additional parking spaces.

TIMELINE

Phase 1 (*approved - to begin spring of 2023*)

- Retaining wall construction and parking lot expansion.
- Clearing, grading, ground contouring, water retention.
- 6 mobile classrooms on parking lot.
- Even though mobile classrooms will be placed on the parking lot, there will be a net increase of parking spaces in Phase 1 for August 2023.
- Dining room expansion dried in but not yet complete

Phase 2 (*proposed*)

- Anticipated contract approval in summer of 2023
- 3-story, 40-classroom addition
- Dining room expansion complete
- Extra serving line
- Media center upgrades
- 6 mobile classrooms removed from parking lot
- Anticipated opening date January 2025



SAFETY & SECURITY

- Designed to operate like a single building under one roof.
- New fire alarm will be included in the addition as well as the existing building in compliance with the local life safety codes and ordinances.
- Contractor is experienced with construction during school operational hours. The team is committed to safety and staying out of the way of day-to-day school functions.

TRANSPORTATION & TRAFFIC

- Construction trailer, material lay down space, and construction parking are yet to be determined.
- Parking space count for staff and students will not be reduced in any phase of the project.
- Construction traffic will not interfere with school operations.

CLASSROOM ADDITION

North Paulding High School

CONCEPT
PLANNING
CONSTRUCTION PHASE 2
COMPLETED



SOUTH ELEVATION
1/8" = 1'-0"

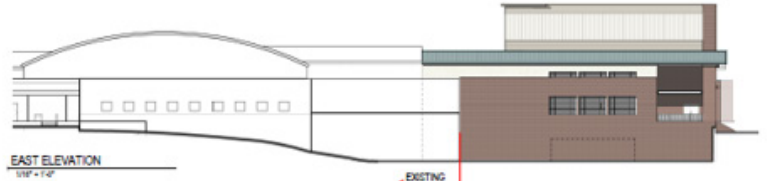


NORTH ELEVATION
1/8" = 1'-0"

Phase 2
3--story
40 instructional units



WEST ELEVATION
1/8" = 1'-0"



EAST ELEVATION
1/8" = 1'-0"

